

ODA-156MHB

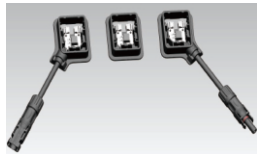
Topcon Technology

POWER RANGE

590W~620W

CELL SIZE

182*91mm

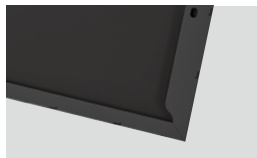


JUNCTION BOX

Waterproof protection grade: IP68
Safety Level: Class II
Maximum System Voltage: 1500V
outstanding waterproof level ·
Effectively resist harsh environments



16BB



Frame

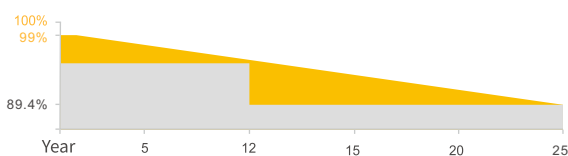
Strong mechanical load
resistance up to 5400Pa
Anodic oxidation layer resistant to
chemical corrosion available

QUALIFICATIONS AND CERTIFICATES



· IEC61215 / · IEC61730

WARRANTY



12 YEARS Guarantee on product material and workmanship

25 YEARS Linear Power output warranty



SMBB Technology

Better light trapping and current collection to improve module power output and reliability.



PID Resistance

Excellent Anti-PID performance guarantee via optimized mass-production process and materials control.



Durability Against Extreme Environmental Conditions

High salt mist and ammonia resistance.



Enhanced Mechanical Load

Certified to withstand: wind load (2400 Pascal) and snow load (5400 Pascal).

NINGBO OSDA SOLAR CO.,LTD
www.osdasol.com

OSDA Solar established in 2008, is a high-tech enterprise integrating R&D, production and sales of solar energy products. It is committed to the overall solution of distributed photovoltaic system and provides services from consulting, design, construction, financing to intelligent operation and maintenance.

OSDA has 3 production sites in China and branches and representative offices in more than 10 countries overseas. Products include solar cells, modules, On/Off grid solar system, solar pump and other solar related applications. Our products have passed many international certifications such as TÜV, MCS, CEC, IEC, ISO, CE, CQC and so on. With excellent quality, our products are exported to more than 100 countries of the world.

Since its establishment, OSDA has always followed the idea of "Smart energy · Lightning future". It has followed the steps of "the Belt and Road Initiative", we bring bright light to the countries and people who are short of electricity. Sharing the concept of modern civilization, and building a green home together.

ELECTRICAL DATA(STC)

Model Type	ODA590-39V-MHB	ODA595-39V-MHB	ODA600-39V-MHB	ODA605-39V-MHB	ODA610-39V-MHB	ODA615-39V-MHB	ODA620-39V-MHB
Peak Power(Pmax)	590.00	595.00	600.00	605.00	610.00	615.00	620.00
Maximum Power Voltage(Vmp)	45.19	45.29	45.39	45.49	45.59	45.69	45.79
Maximum Power Current(Imp)	13.06	13.14	13.22	13.30	13.38	13.46	13.54
Open Circuit Voltage(Voc)	54.65±3%	54.80±3%	54.95±3%	55.10±3%	55.25±3%	55.40±3%	55.55±3%
Short Circuit Current(Isc)	13.82±3%	13.90±3%	13.97±3%	14.04±3%	14.11±3%	14.18±3%	14.25±3%
Module Efficiency(%)	21.11	21.29	21.46	21.64	21.82	22.00	22.18

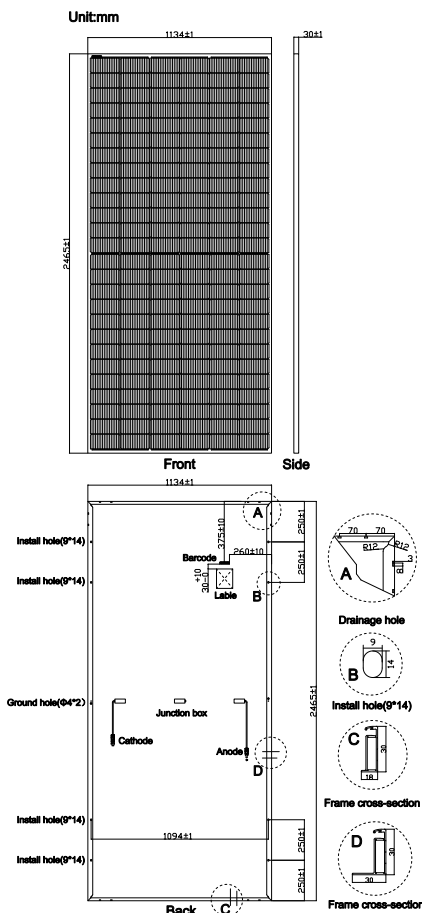
*STC: irradiance 1000W/m², AM1.5, and cell temperature of 25°C

ELECTRICAL DATA(NMOT)

Model Type	ODA590-39V-MHB	ODA595-39V-MHB	ODA600-39V-MHB	ODA605-39V-MHB	ODA610-39V-MHB	ODA615-39V-MHB	ODA620-39V-MHB
Peak Power(Pmax)	443.00	447.00	451.00	455.00	459.00	462.00	465.00
Maximum Power Voltage(Vmp)	41.81	41.93	42.05	42.16	42.28	42.39	42.50
Maximum Power Current(Imp)	10.61	10.67	10.73	10.79	10.85	10.91	10.97
Open Circuit Voltage(Voc)	51.90±3%	52.05±3%	52.20±3%	52.34±3%	52.48±3%	52.62±3%	52.76±3%
Short Circuit Current(Isc)	11.16±3%	11.22±3%	11.28±3%	11.34±3%	11.39±3%	11.45±3%	11.51±3%

*NMOT: irradiance 800 W/m², AM 1.5, ambient temperature 20°C, wind speed 1 m/s

PV DRAWINGS



TEMPERATURE & MAXIMUM RATING

Maximum System Voltage (V)	1500
Maximum Series Fuse Rating (A)	25
Power Tolerance (W)	0~+3%
Pmax Temperature Coefficients (W/°C)	-0.300%
Voc Temperature Coefficients (V/°C)	-0.260%
Isc Temperature Coefficients (A/°C)	+0.047%
NMOT Nominal Module Operating Temperature (°C)	45±2
Operating and Storage Temperature (°C)	-40~+85

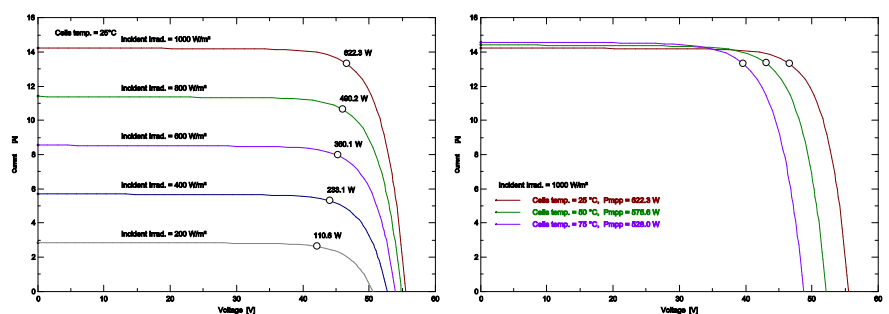
MECHANICAL CHARACTERISTICS

Cell Type	182*91 N Type Mono
No. of Cells	156 (12*13)
Dimensions	2465*1134*30mm
Weight	30.00kg
Front Glass	3.2mm high transmission, low iron, tempered glass
Frame	Anodized Aluminium Alloy
Junction box	IP68 3diodes
Output cables	4mm ² cable 35cm (Including MC4 connector)
MaxWind Load/Snow Load	2400Pa/5400Pa

PACKING WAY

20FT container	4 Packages/148pcs
40HQ container	16 Packages/592pcs

IV CURVE (620W)



We Are Seeking Agents And Partners!

ADD:1-1, No.136, Haichuan Road, Jiangbei Area, Ningbo City, Zhejiang Province, P.R. China

Tel : 86-574-87915068
Call: 86-13566302808
E-mail : sales@osdasol.com

The company reserves the right of final interpretation

